



Developers :



RDA SOLUTIONS PRIVATE LIMITED

Plot No : N-1/A-12, IRC Village, Nayapalli,
Near CRP Square, Bhubaneswar-751015
Telefax : +91 674 2555776
E-mail : rdasolutions@gmail.com

Architect :

R&P Associates
491/2, Sahid Nagar, Bhubaneswar
Tel. : +91 9437008609
www.rpassociates.in

designed & printed at : ARTECH, BBSR, CELL : +91 9437162825

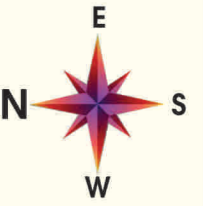
The brochure is not a legal document. It has been produced for the general promotion of the development and for no other purpose. All information contained in this brochure is taken from design intent material and may be subject to further design development. These details do not form any part of any contract and whilst every effort has been made to ensure their accuracy, this cannot be guaranteed and intending purchasers should not rely on them as statements or representation of facts.



“ *We count our fortune
in the smiles of your family* ”

A One Residency

| Flat | Super Built-up |
|------|----------------|
| 101 | 1246 Sft |
| 102 | 1535 Sft |

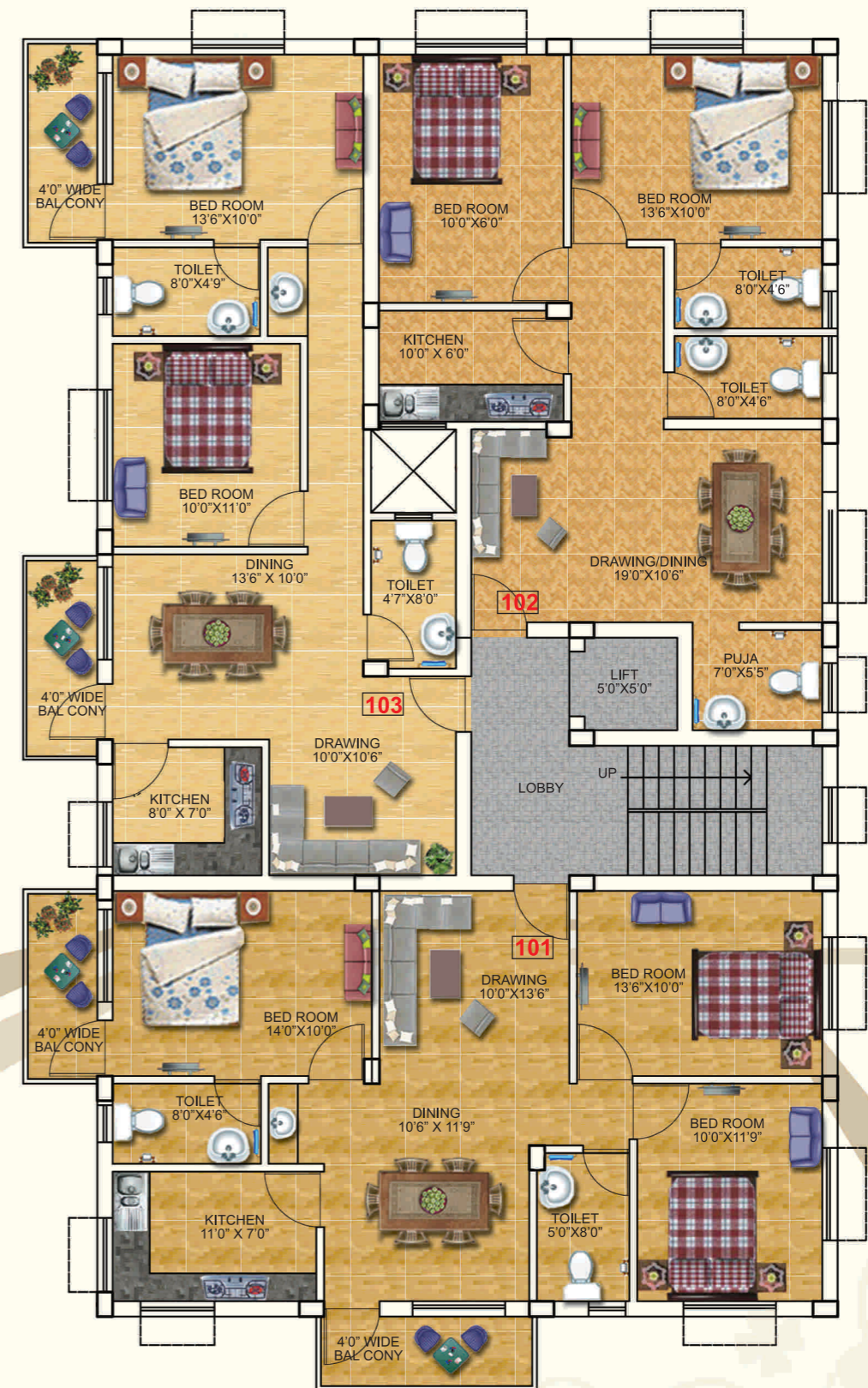


RDA Solutions Pvt. Ltd. the promoters of 'A One Manson & A One Residency' present you an aesthetically designed, economically viable residential complex providing with a greener, Cleaner, eco-friendly living to develop and deliver in high standard of quality in all its venture.

'RDASPL assures clear title, professional dealing, quality construction and timely delivery to its prospective buyers. 'A One Manson & A One Residency' tucked away from the hustle & bustle of city life is located in paikarapur in close proximity of 'Sum Hospital', D.A.V. Public School and other important institution. We assure you with us you would experience possibilities limitless and best return of your life long savings.



A One Mansion



| Flat | Super Built-up |
|------|----------------|
| 101 | 1038 Sft |
| 102 | 880 Sft |
| 103 | 821 Sft |



MISSION

To provide value to the customer by timely delivery of quality products and services in a cash efficient manner backed by transparent and ethical practices.



Specifications

STRUCTURE

- Super Structure Seismic II zone compliant with RCC framed structure.
- Internal & External Walls First Class Cement Blocks/Flyash Brick.
- Plastering One coat plastering.

DOORS

- Main Door Decorative Teak wood Door with Lock & Eye Piece.
- Internal Doors Salwood frame with Teak wood door.

WINDOWS

- Grills M.S., painted, aesthetically designed and fixed to the wall

FLOORING

Marble Flooring with skirting in the flats and Kota stones in the common areas, Acid resistant antiskid ceramic tiles for bathrooms.

TILES CLADDING

- Kitchen Dado in Kitchen, Glazed ceramic tiles dado up to 2'0" height above kitchen platform.
- Bathrooms Glazed ceramic tiles of Johnson/Somany or equivalent make upto to door height.

PAINTING

- External Two coats exterior Acrylic Emulsion (weather coat) paint of Asian/ICI or equivalent make over one coat of primer.
- Internal Smooth wall finish with Acrylic emulsion paint of Asian/ICI or equivalent make over one coat of primer.

KITCHEN

Granite platform with stainless steel sink, Provision for fixing of Aquaguard, Provision for cabinets, exhaust fan & chimney.

TOILETS

All toilets will consist of Wash basin, EWC with flush tank of Hindustan/Parry or equivalent make. Provision for geysers in all toilets.

ELECTRICAL

Concealed copper wiring of Finolex/Anchor or equivalent make. Power plug for cooking range chimney, refrigerator, microwave ovens, mixer/grinders in kitchen. Plug points for TV & Audio systems etc. Individual meter boards, Miniature Circuit Breakers (MCB) for each distribution boards & Modular Switches of reputed make.

CONNECTIVITY

- Telecom Telephone point in all bedrooms, living & dining areas. Intercom facility to all the units.
- Cable TV Provision for cable TV connection in master bedroom and living room
- Lifts 4 passenger lifts.

GENERATOR

D.G. set backup for common areas and 60 watt supply in each flat.

Payment Schedule

| | | |
|--|---|----------------|
| With Application (Initial Booking Amount) | : | Rs.5,00,000.00 |
| On allotment & Agreement (Including Initial Booking Amount) | : | 30% |
| On Completion of Plinth Level | : | 25% |
| On Completion of the structure work and roof slab casting | : | 20% |
| On completion of Brick Work | : | 10% |
| On completion of flooring & Plastering of Flats | : | 10% |
| During Possession & Registration | : | 5% |



Location Map

